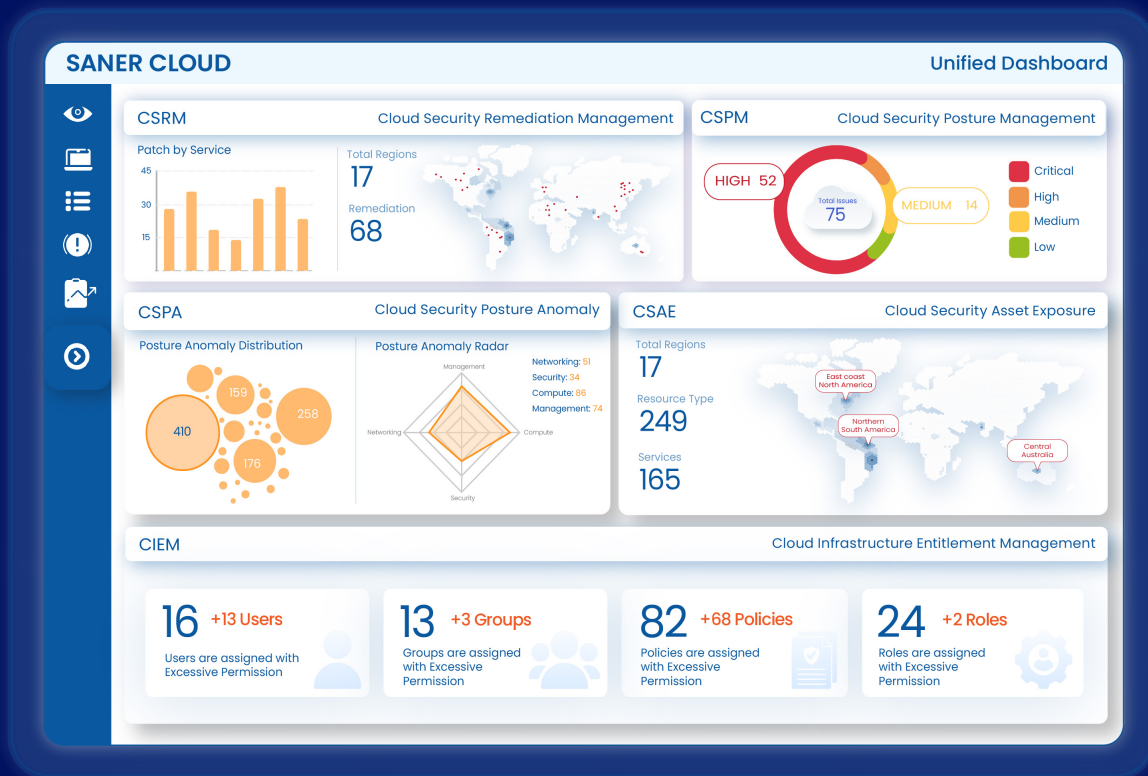


SANER CLOUD



A Peek Inside Saner Cloud's Expansive Capabilities



- 1. AI-Fortified Cloud Security:** Saner Cloud CNAPP integrates CSPM, CIEM, CSAE, CSPA, CWPP, and CSRM into one solution that delivers AI-driven monitoring, analysis, and remediation for workload, identity, and risk management.
 - 2. Workload Management:** Our tools provide full visibility and strong protection for VMs, containers, and apps. Continuous monitoring, automated patching, and remote troubleshooting simplify operations and break silos.
 - 3. Cloud Infrastructure Entitlement Management (CIEM):** Access controls follow a least-privilege model with detailed permission analysis and anomaly detection. Multicloud policy management and automated remediation cut unauthorized escalations.
 - 4. Vulnerability Management:** Continuous scans detect vulnerabilities daily with context-aware analysis. Workflow procedures help fix issues while meeting compliance standards.
 - 5. Cloud Security Posture & Asset Exposure:** Active inventory and geo-mapping reveal cloud resource details and configurations. Machine learning spots misconfigurations and anomalies while HIPAA and NIST standards shape remediation.
 - 6. Cloud Risk Remediation (CRR):** AI-powered workflows mitigate risks with pre-deployment checks and real-time dashboards. Speed up issue resolution with Automated assessments and response.
 - 7. Cloud Risk Assessment (CRA):** Risk assessments compile threat data and rank risks across hybrid setups. Predictive metrics and clear dashboards simplify vulnerability ranking and planning.
- 

SANER CLOUD

AI-Fortified CNAPP to Prevent Future Threats Today

Cloud computing has evolved faster than anyone expected, and cloud-based cyber threats have evolved just the same.

Addressing these new risks is challenging, but Saner Cloud is built to ensure that a threat never materializes. Unlike others who react, Saner Cloud prevents.

Our AI-powered cloud-native application protection platform (CNAPP) goes beyond vulnerability detection to eliminate attack vectors before they can ever be exploited.

Unified Cloud and On-Prem Security Solution

Saner Cloud is the industry's only prevention-first solution that breaks down silos and smoothly integrates cloud and on-premises security through one simple, intuitive, easy-to-use dashboard.

Coupled with Saner CVEM, Saner Cloud offers powerful, cohesive protection across your entire infrastructure — all with the added benefits of our native AI capabilities.



Integrated Capabilities for Holistic Cloud Protection

CLOUD SECURITY ASSET EXPOSURE (CSAE)

1. Thorough, detailed discovery and inventory of cloud resources, including services, processes, and open ports.
2. Real-time updates with AWS and Azure Service Maps, geo-location tracking, and cost analysis.
3. Identifies shadow IT and unused resources, enabling efficient utilization and license compliance.
4. Monitors traffic patterns and detects unauthorized configurations.

CLOUD SECURITY POSTURE MANAGEMENT (CSPM)

1. Continuous, automated scanning for misconfigurations and compliance gaps using 75+ anomaly computation rules.
2. AI-powered dashboards classify risks by severity and provide recommended remediations.
3. Ensures adherence to standards like CIS, NIST, HIPAA, and PCI-DSS with built-in templates and quick-fix scripts.
4. Supports policy enforcement and real-time drift detection to maintain secure configurations.

CLOUD WORKLOAD PROTECTION PLATFORM (CWPP)

1. **Vulnerability Management (VM)**
Scans 175,000+ vulnerabilities with daily updates, prioritizing issues based on exploitability and business impact.
2. **Posture Management (VM)**
Evaluates 2000+ metrics to identify anomalies like unauthorized commands and unusual firewall configurations.
3. **Compliance Management (CM)**
Automated scanning with 25,000+ compliance checks and built-in remediation scripts aligned with industry standards.
4. **Workload Management (WM)**
Multi-OS support for Windows, Linux & Mac OS, with features like remote monitoring, software deployment, application blocking, and quarantine controls.

CLOUD IDENTITY ENTITLEMENT MANAGEMENT (CIEM)

1. Automates identity governance to prevent privilege escalation and unauthorized access.
2. Monitors and audits cloud identities, tracking critical activities and enforcing access policies.
3. Detects anomalous behaviors and enforces granular access controls to reduce attack vectors.



CLOUD SECURITY POSTURE ANOMALY (CSPA)



AI-driven anomaly detection identifies deviations from secure baselines and flags potential misconfigurations.

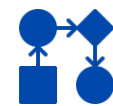


Provides automated alerts and recommended remediations to maintain security posture and prevent configuration drift.



Tracks historical trends to support forensic analysis and compliance audits.

CLOUD SECURITY REMEDIATION MANAGEMENT (CSRM)



Automated remediation workflows with intuitive dashboards and customizable templates.



Supports patching, configuration adjustments, and incident response procedures for rapid vulnerability resolution.



Simultaneously addresses multiple issues through batch remediation to minimize exposure windows.

READY TO EXPERIENCE PREVENTION-FIRST CLOUD SECURITY?

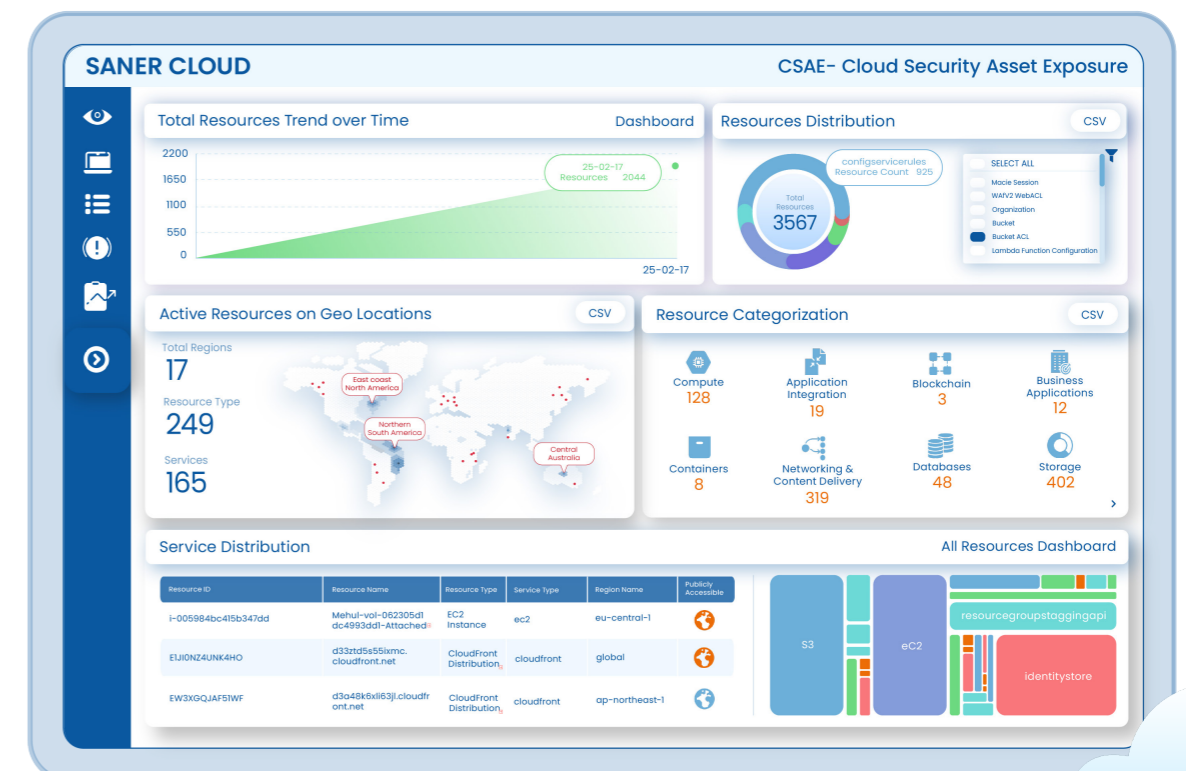
Schedule a demo of Saner Cloud today and simplify the task of managing cloud security for your organization!

Why Saner Cloud is the Ideal Choice?

Saner Cloud combines advanced AI technology with deep scanning and automated compliance checks, simplifying security management without compromising performance. Its centralized dashboard brings cloud and on-prem oversight together, enabling cost-effective and proactive operations at scale.

With intelligent risk prioritization, in-depth workload protection, and actionable reporting, Saner Cloud aligns teams around clear insights and rapid responses. Integrated with our existing Saner CVEM capabilities, it streamlines workflows and accelerates compliance adherence to meet organizational goals.

Ready to experience true, prevention-first cloud security?





SECPod

CONTACT US

info@secpod.com/www.secpod.com

© 2025 SecPod Technologies. All Rights Reserved.